



Voluson Expert 22 Artificial Intelligence

You Set the Limits

Artificial Intelligence (AI) has become part of our everyday lives – reducing tasks and simplifying our daily routines. It is also beginning to play an important role in women’s health – helping to improve the delivery of care and efficiency of ultrasound exams. The Voluson™ Expert 22 contains AI tools to help you be more efficient, allowing you to reduce repetitive tasks and focus on your patients and practice needs.



ACHIEVE THE UNACHIEVABLE

Designed with a new generation of artificial intelligence, the Voluson Expert 22 helps increase exam speed and accuracy to streamline your day.

SonoLyst

Harnessing the power of AI, SonoLyst takes Scan Assistant to the next level, automatically identifying fetal anatomy seen on standard views.

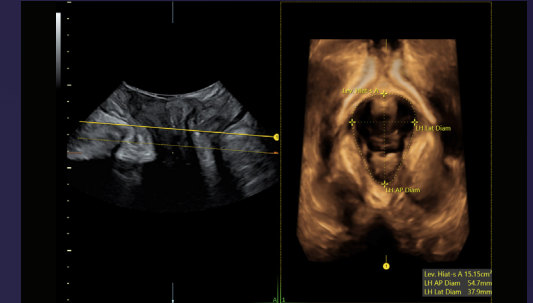


SonoLystIR: Simply scan, then freeze, and SonoLystIR (Image Recognition) does the rest. Using ISUOG practice guidelines for performance of the routine mid-trimester fetal ultrasound scan, SonoLystIR automatically detects the 21 recommended views. It identifies anatomy then selects all applicable annotations and measurements. Confirm, and data is entered into the Scan Assistant checklist and report, enhancing workflow and reducing variability between operators for improved consistency.

SonoLystX: Build and refine your skills with SonoLystX, your virtual, on-board ultrasound expert. Using AI, the system compares the image or view acquired to standard criteria accepted by experts to ensure it meets clinical standards. SonoLystX can help enhance accuracy and quality with anatomy diagrams plus the ability to insert image examples. Ideal for teaching and training, progress can be monitored for quality assurance to ensure the highest quality imaging standards and consistency.

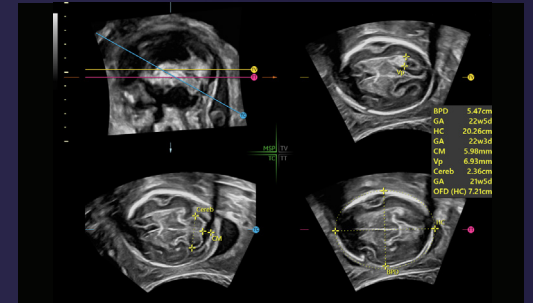
SonoPelvicFloor

Analysis of the pelvic floor anatomy can be complicated. Through AI, SonoPelvicFloor simplifies the 4D exam process by automating plane alignment, measurements, and workflow guidance to eliminate uncertainty while improving efficiency.



SonoCNS

SonoCNS supports consistent measurements and helps drive workflow efficiency by helping align and display recommended views and measurements of the fetal brain from a 3D volume.



fetalHS

A guided workflow with step-by-step instructions to help identify normal anatomy with a focus on Fetal Situs, 4-Chamber Heart, 3-Vessels and Trachea View, and Cardiac Axis. Includes instructional messages, reference images, and diagrams that represent normal anatomy. 4CH, 3VV/3VT, and Cardiac Axis automatically generated from user acquired cine loops.



© 2022 General Electric Company.

GE Healthcare reserves the right to make changes in specifications and features shown herein, or discontinue the product described at any time without notice or obligation. Contact your GE Healthcare representative for the most current information. GE, the GE Monogram, and Voluson are trademarks of General Electric Company. SonoLyst incorporates the AI technology of Intelligent Ultrasound. GE Healthcare, a division of General Electric Company. GE Medical Systems, Inc., doing business as GE Healthcare.

March 2022
JB18773XX

