



POWERED BY AI
ELEVATED BY YOU

Vivid™ T9
Ultra Edition



vivid

gevidultraedition.com

Vivid T9 - Ultra Edition

POWERED BY AI, ELEVATED BY YOU

Designed for your busy practice, Vivid T9 Ultra Edition provides reliable and ergonomic design, powered with AI applications for extreme productivity without compromising quality of care.



MODERN ERGONOMICS

Sleek and maneuverable design with ergonomic user interface

21" ultra-high-resolution, wide format, color screen

Articulating monitor arm

10.1" high-resolution touch panel

Convenient operating panel with integrated alphanumeric keyboard

Single-hand push button for up/down and left/right swivel adjustment. Perfect for sitting and standing position

Printer and Video printer shelf (optional)

Cable management hooks

Ergonomic transport push handle

Removeable and cleanable storage bin

Large wheels for easy system transport

Compact and maneuverable design - A lightweight (60 kg / 132 lbs) system with compact footprint

Eco-friendly design - Extremely silent system with average noise level of 31 dB.
Black & white inverted printing, preventing waste of ink and paper

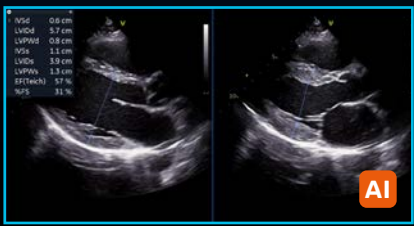
Powered by AI

Ultra Fast. Ultra Precise. Ultra Efficient.

Vivid T9 Ultra Edition introduces the latest AI-based technology to help reduce user fatigue and improve workflow efficiency. Diagnose more confidently and accelerate exams via automated (AI-driven) Cardiac Doppler and 2D LV measurements.



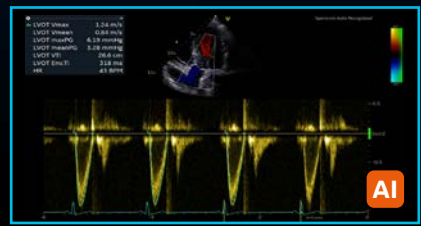
The results are impressive. Exam time is reduced, operator fatigue minimized.



AI Auto Measure 2D

With the power of AI, the manual caliper measurements can be completed with 3 clicks: Freeze – Measure – Auto. A full set of reproducible measurements will instantly appear on the screen.

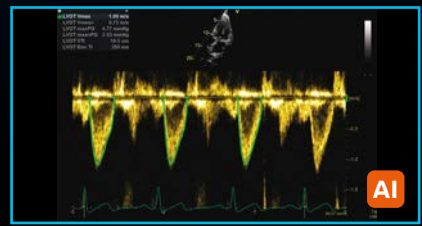
LESS CLICKS, UP TO¹
 -80%



AI Auto Measure Spectrum Recognition

With the power of AI, a wide range of Doppler measurements can be completed with 2 clicks: Freeze – Measure. A Doppler trace and full set of associated measurements will instantly appear on the screen.

ACCURACY¹
 98%



Cardiac Auto Doppler with AI

Semi-automatic Cardiac Doppler measurements. Enhances reproducibility of follow-up studies when used in automated mode², Offers Doppler measurement in multiple cardiac cycles as recommended by guidelines for irregular heart rhythms.^{3,4}

REDUCED TIME PER MEASUREMENT²
 UP TO 93%



AutoEF with Optional ECG



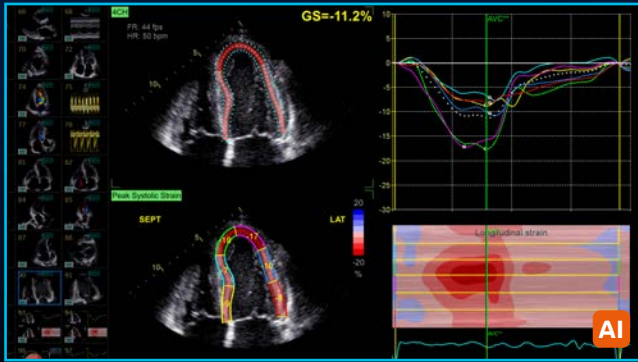
Use AutoEF on your adult patients with or without ECG to quickly and easily validate your visual assessment.⁵

- Benefits:
- Standardized patient ejection fraction trending
 - Improved patient comfort and time saving by eliminating the need to attach and tear-down ECG electrodes⁵

AutoEF achieves fast measurements of ejection fraction, and allows for assessment of the LV ejection fraction also on data sets acquired on other vendor's systems.⁵

GE's AutoEF, provides semi-automated quantification of left ventricular volumes and ejection fraction.

AFI - Automated Function Imaging

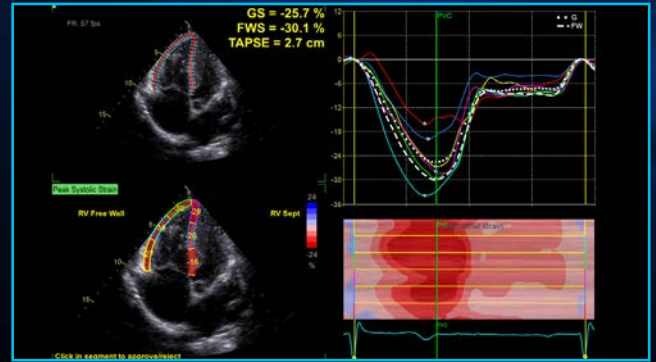


AFI LV with AI-based View Recognition*

Powered by AI-based View Recognition, AFI LV provides semi-automated quantification of left ventricular global and segmental strain.

Benefits:

- Offers advanced industry pioneered speckle tracking algorithm for quantifying myocardial deformation
- Works seamlessly - integrated ejection fraction calculation
- Supports Adult and Pediatric TTE and Adult TEE images
- Provides time savings via automatic selection of the appropriate 4-chamber, 2-chamber and APLAX images for analysis
- DICOM support. Assessment of the left ventricle ejection fraction also on data sets acquired on other vendors' systems



AFI RV

AFI RV is a novel tool to assess the right ventricular function by advanced speckle tracking echocardiography.

Benefits:

- Offers renowned Vivid AFI user interface and workflow to allow current and new users easy adoption
- Supports right ventricle free wall strain, global strain and Tricuspid Annular Plane Systolic Excursion (TAPSE)
- Follows the 2018 EACVI-ASE Strain Standardized Task Force guidelines⁶
- Supports right ventricle images also from previous releases

AFI LA

AFI LA is a novel method to assess the left atrial function allowing global strain to be measured using speckle tracking echocardiography.

Benefits:

- Offers Vivid renowned AFI user interface and workflow allowing users to easily adopt
- Supports left atrium strain, volumes and emptying fraction measurements
- Follows the 2018 EACVI-ASE Strain Standardized Task Force guidelines⁶
- Supports left atrium images also from previous releases



APPLICATIONS POWERED BY 

*View Recognition is only applicable to images acquired with TTE probe on GE systems

VIVID HEART APPLICATIONS

A wide range of clinical applications for use in echo exams and your cardiovascular practice.



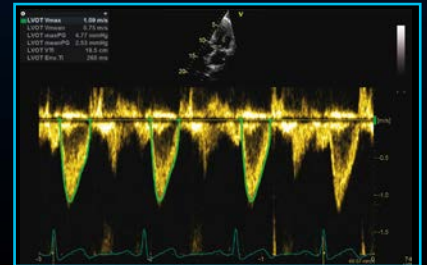
B-Mode

The complete range of cardiological probes offers the best possible spatial, temporal and contrast resolution across adult and pediatric patients.



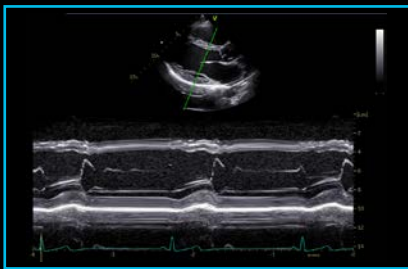
Color flow

State-of-the-art transducer technology delivers you excellent color sensitivity, contrast resolution and color depth.



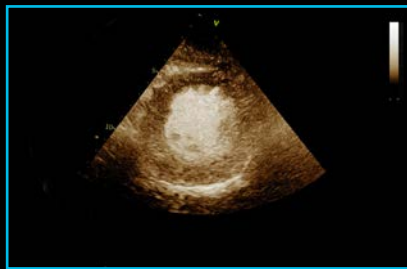
PW / CW Doppler

The sensitive spectral Doppler enables reproducible Doppler measurements, both in both adult and pediatric TTE and TEE examinations.



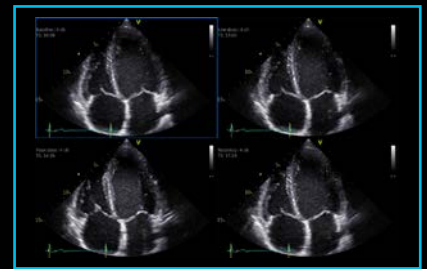
Curved Anatomical M-Mode

View Anatomical color and tissue velocity in M-mode. Adjust the cursor at any plane, in live imaging or with recalled images.



LVO Contrast

Benefit from high-resolution detection of contrast in the LV cavity with LVO Contrast and excellent suppression of myocardial tissue signals on the Vivid T9 Ultra Edition new Coded Phase Inversion (CPI).



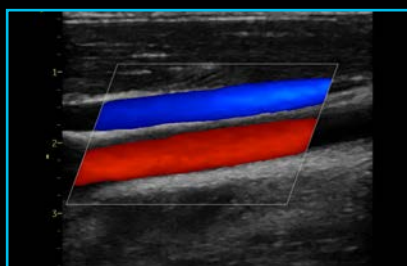
Smart Stress

Over 17 imaging parameters from each plane can be saved and recalled at each stress level, reducing system adjustments during acquisition.

Clinical excellence beyond Cardiology

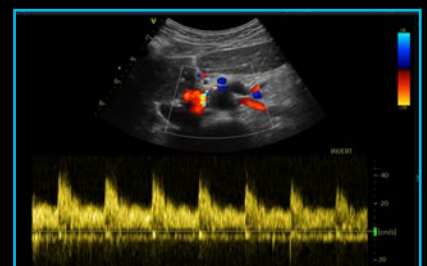
The demand for multi-purpose, cost efficient ultrasound systems with uncompromised image quality is growing. With the aging population, vascular and abdominal exams are increasingly challenging.

Vivid T9 Ultra Edition provides you exceptional 2D and color flow imaging across applications. Efficient workflow, a wide range of linear and curved probes and dedicated quantification tools ensure the confidence you need for speedy and accurate diagnosis also under challenging conditions.



Vascular

Develop fast and complete quantitative assessment of vascular anatomies with dedicated probes and presets.



Abdominal

Visualize abdominal tissue with clarity thanks to Vivid T9 Ultra Edition's high-resolution imaging and dedicated imaging presets.

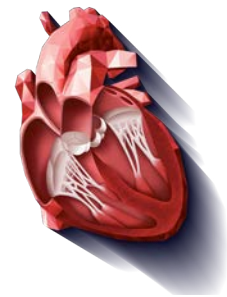
WORKFLOW INTEGRATION

EchoPAC Software Only and EchoPAC Plug-in:

- Analyze and review data from GE Healthcare Vivid family of scanners, as well as DICOM images from other ultrasound systems
- Access all Vivid measurement and review tools utilizing GE Healthcare Raw Data or industry standard DICOM data
- DICOM Image transfer with optional GE Healthcare Raw Data transfers images easily in your existing workflow
- DICOM SR Measurement Transfer including standard and custom measurement allows seamless integration with GE Healthcare and other industry reporting systems and EMRs ⁷

EchoPAC Plug-in is available for:

- GE Healthcare Centricity™ Cardio Enterprise with Intelligent Reporting (IR)
- GE Healthcare ViewPoint™ 6 with EchoPAC Suite ⁸
- As a plug-in to third party PACS



SonoDefense

Advanced cybersecurity and data privacy protection



- Facility echosystem
- Network firewall
- Windows 10 hardening
- Malware protection
- Local/remote access management
- PHI Encryption



Unleash the power of connected devices

Your Vivid system has been designed to provide you with an optimal user experience.

Connectivity is the key element to enjoy it fully, whenever and wherever you need it, regardless of site access restriction and planning constraints.

Discover a new world of services, included in every package:

REMOTE TECHNICAL SUPPORT

ACCESS TO EXPERTS ANYTIME, ANYWHERE

InSite™ connectivity enables OnDemand and real-time access to remote GE Healthcare experts

- Reduce disruptions
- Decrease system downtime
- Improve asset usage and staff productivity

It provides secure remote connectivity without requiring any open inbound ports or VPN connection.

REMOTE FIX



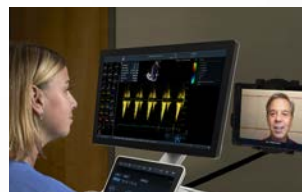
issues fixed remotely with InSite™⁹

NEW REMOTE SUPPORT

REAL-TIME AND INTERACTIVE APPLICATIONS SUPPORT

Digital Expert¹⁰ and **STAR** provide an interactive, real-time, flexible & convenient way to get education and support.

- May help improve training outcomes
- Increase capacity and efficiency
- Train staff on a short timeline



NEW AUTOMATED UPDATES

NO NEED TO WORRY ABOUT YOUR SYSTEM SAFETY

Get automated software updates with **eDelivery** along with safety patches enabled by remote software download. **SonoDefense** provides the highest level of cybersecurity to keep your systems up-to-date, with no impact on your operations. No on-site intervention needed.

PREDICTIVE MAINTENANCE

KNOW THE FAILURE BEFORE IT OCCURS

Transform unplanned downtime into planned service events with **OnWatch** technology. It provides automated, 24/7 system monitoring, capable of detecting a system failure before it occurs. Any deviation alerts our GE Healthcare engineers, who proactively work to keep your operations running smoothly.

COST SAVINGS



cost reduction, based on OnWatch alerts⁹

DATA DRIVEN INSIGHTS

ALL THE INSIGHTS YOU NEED TO DECIDE, AT YOUR FINGERTIPS

Better decisions start with better data **iCenter™** is a secure, cloud-based asset management tool that offers comprehensive data analytics for your systems. It provides insights to make informed decisions and helps improve operational performance, optimize patient flow and maintain compliance standards.

UpdateMe is a complementary app that gives you access to the data 24/7 directly on your smartphone. You can receive notifications and create a service request anytime, anywhere.



About GE Healthcare

GE Healthcare is a leading global medical technology and digital solutions innovator. GE Healthcare enables clinicians to make faster, more informed decisions through intelligent devices, data analytics, applications and services, supported by its Edison intelligence platform. With over 100 years of healthcare industry experience and around 50,000 employees globally, the company operates at the center of an ecosystem working toward precision health, digitizing healthcare, helping drive productivity and improve outcomes for patients, providers, health systems and researchers around the world.

Follow us on [Facebook](#), [LinkedIn](#), [Twitter](#) and [Insights](#) , or visit our website www.gehealthcare.com for more information.

1. The Role of AI in Streamlining Echocardiography Quantification White Paper, Kristin McLeod - JB00888XX
2. Based on results of time and motion study conducted by GE "JB49055XX - Cardiac Auto Doppler"; study results indicated time savings related productivity increase up to ~8 on an annual basis for a facility per sonographer
3. European Association of Echocardiography recommendations for standardization of performance, digital storage and reporting of echocardiographic studies (Eur Journal of Echo 2008 - Evangelista, Badano, Monaghan, Zamorano, Lancellotti).
4. Recommendations for Quantification of Doppler Echocardiography: A Report From the Doppler Quantification Task Force of the Nomenclature and Standards Committee of the American Society of Echocardiography (JASE 2002)
5. AutoEF without ECG is available only for GE Vivid RAW data. See the product User Manual for list of prerequisites for successful operation of AutoEF without ECG.
6. Standardization of left atrial, right ventricular, and right atrial deformation imaging using two- dimensional speckle tracking echocardiography: a consensus document of the EACVI/ASE/Industry Task Force to standardize deformation imaging. Badano et al. European Heart Journal - Cardiovascular Imaging (2018) 0, 1–10 doi:10.1093/ehjci/jeu042
7. With the DICOM SR support, Measures & Analysis (M&A) for an exam can be sent at the end of the exam or when exported from local archive. The destination can be either a server on the network (Storage SCP) or a removable media (DICOM Media) depending on the DICOM dataflow selected. Custom measurements supported only for Adult Echo (TID5200) and Pediatric Heart (TID5220).
8. EchoPAC Suite is a marketing name for EchoPAC Plug-in
9. GE internal data
10. Digital Expert is only offered in the USA

©2020 General Electric Company. All rights reserved. GE, the GE Monogram,

EchoPAC Suite is a marketing name for EchoPAC Plug-in. Vivid, cSound, XDclear, HDlive, EchoPAC, ViewPoint, Centricity, Edison and InSite are trademarks of General Electric Company. GE Healthcare, a division of General Electric Company.

DICOM is the registered trademark of the National Electrical Manufacturers Association for its standards publications relating to digital communications of medical information.

Third part trademarks are the property of their respective owners.

JB16504XX