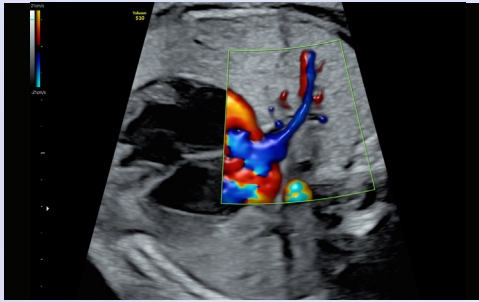




Voluson™ S10 Expert

IMAGE GALLERY

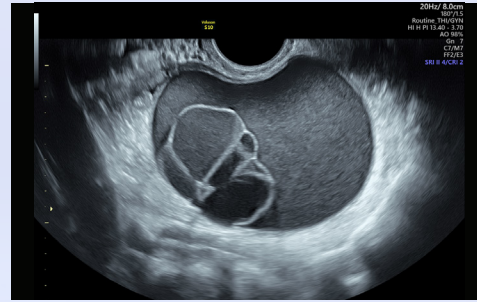




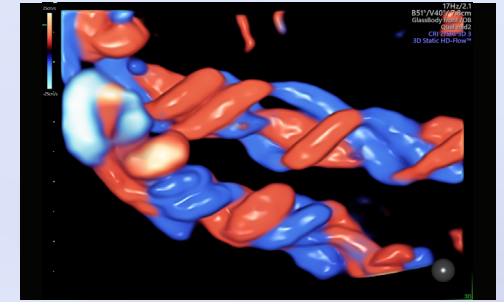
Radiantflow™ Pulmonary Veins



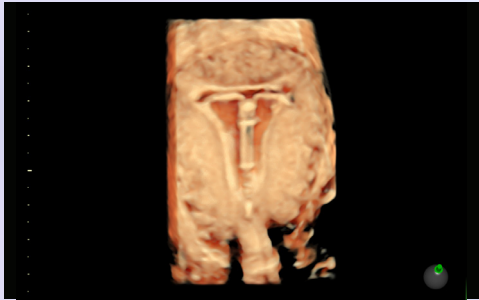
HDlive™ Fetal Face



Wide-sector Complex Ovarian Cyst



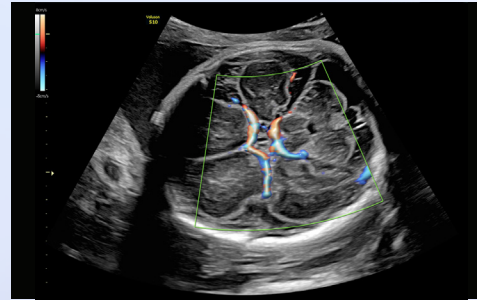
HDlive Flow Umbilical Cord



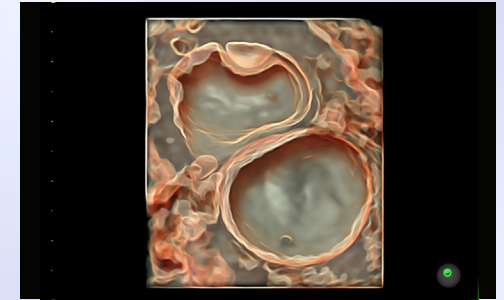
HDlive IUD



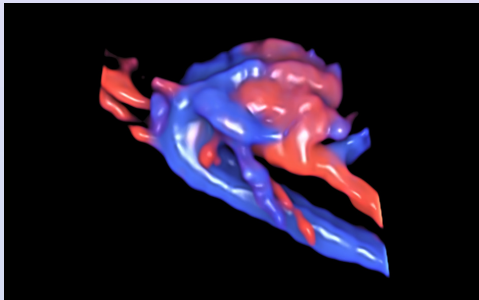
Fetal Kidney



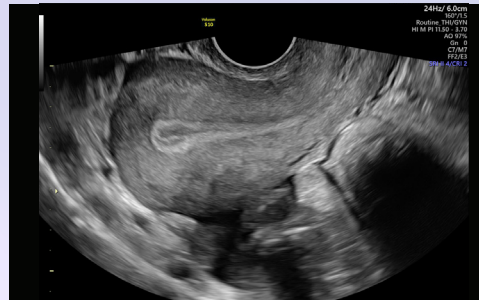
HD-Flow™ & Radiantflow Circle of Willis



HDlive Silhouette Cystic Adnexal Mass



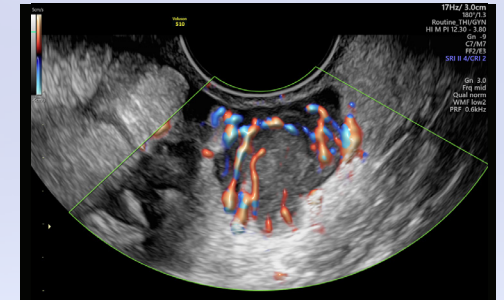
STIC with HD-Flow Fetal Heart & Aortic Arch



Uterus



HDlive 11-Week Fetus



HD-Flow & Radiantflow Ovarian Mass



© GE, 2021

GE Healthcare reserves the right to make changes in specifications and features shown herein, or discontinue the product described at any time without notice or obligation. Contact your GE Healthcare representative for the most current information. GE, the GE Monogram, Voluson, HD-Flow, Radiantflow and HDlive are trademarks of GE. GE Healthcare, a division of GE. GE Medical Systems, Inc., doing business as GE Healthcare.

November 2021
JB18138XX