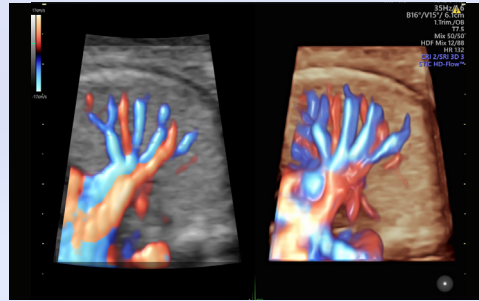


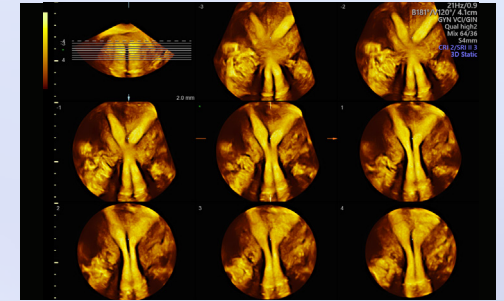
Fetal Spine



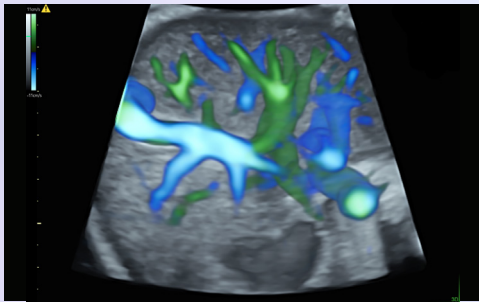
HD-Flow™ Pulmonary Vessels



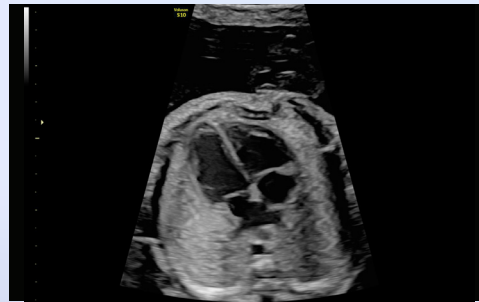
HDlive™ Fetal Face



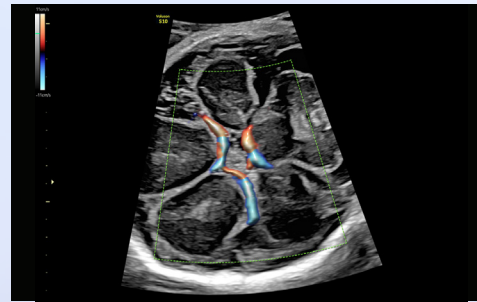
TUI Septate Uterus



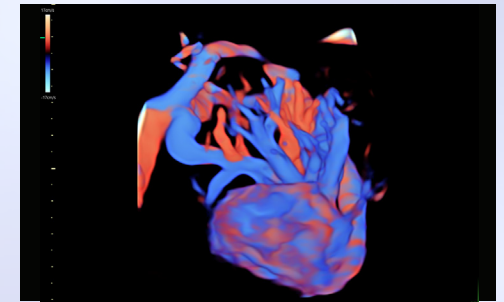
3D Glassbody Abdominal Vessels



4-Chamber Heart



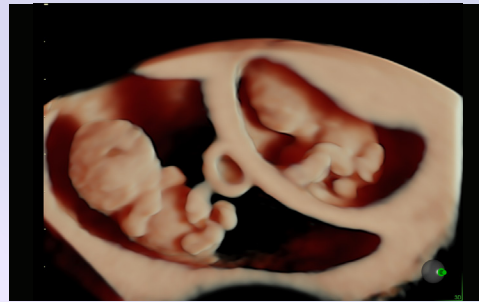
HD-Flow & Radiantflow™ Circle of Willis



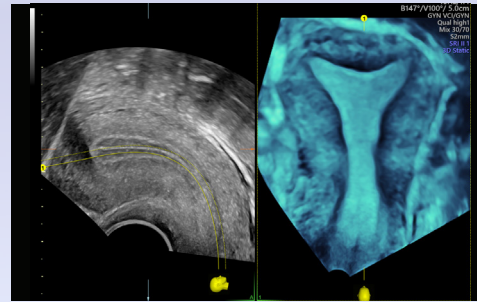
3D Color STIC



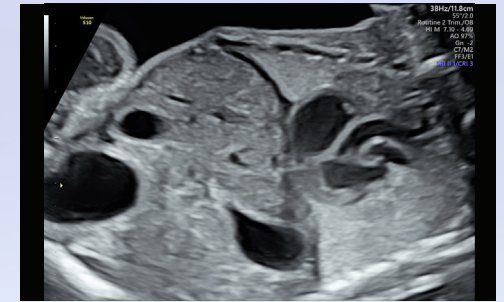
SonoNT™ Nuchal Translucency, SonoIT Intracranial Translucency



HDlive Twins



OmniView Normal Uterus



Fetal Diaphragm



© GE, 2021

GE Healthcare reserves the right to make changes in specifications and features shown herein, or discontinue the product described at any time without notice or obligation. Contact your GE Healthcare representative for the most current information. GE, the GE Monogram, Voluson, SonoNT, HD-Flow, Radiantflow and HDlive are trademarks of GE. GE Healthcare, a division of GE. GE Medical Systems, Inc., doing business as GE Healthcare.

November 2021
JB18020XX