

Venue™

Made for Your Point-of-Care.



Simple. Fast. Precise.



Made for you.

As the premier point-of-care ultrasound from GE Healthcare, Venue is the simple, fast and precise ultrasound for your point-of-care. Venue is adaptable, intuitive and easy to clean while its AI-enabled tools help simplify the complex, enable fast assessments, support your life-saving decisions and help monitor patient progress in unpredictable environments.



No buttons—No knobs

A 19-inch touch screen monitor with a simple and intuitive interface works even with gloves or screen covers on. Equipped with an articulating monitor, Venue is easy to reposition for different scans and procedures.



Infection control

An easy to clean, smooth and seamless surface supports infection control efforts.



Work smarter, not harder

Precise tools are designed to enable fast patient assessments and confident decisions. Utilizing proprietary algorithms, we synthesized patient data to ensure accurate calculations for clinical confidence.



Customizable probe portfolio

Fit your probe lifecycle needs with a customizable portfolio equipped with proactive probe care to help increase diagnostic quality, decrease cross-contamination risk and expand the life span of the transducers.



Raise and lower with ease

You can easily raise and lower the system for an optimal view and comfortable ergonomics.



4 probes up top

With four probe ports, easily access a variety of probes and keep them in good condition with smart cable management that puts probes safely up top. Probes are kept high in the holder to get cables out of the way and to enable the application of a sterile cover.



4 hour battery life

A long-lasting battery provides up to four hours of scan time. An easy-to-see, count down timer changes color when you are running low.



Uniquely adaptable

Detachable holders and bins allow you to configure the system to fit your needs. Store gel packets and needles in easy-to-reach places and connect the larger bin to the front or back.



Built for durability

A screen durable enough to withstand bumps, bangs and splashes, Venue will not hit the wall thanks to the bumpers and multi-purpose handle on the system.



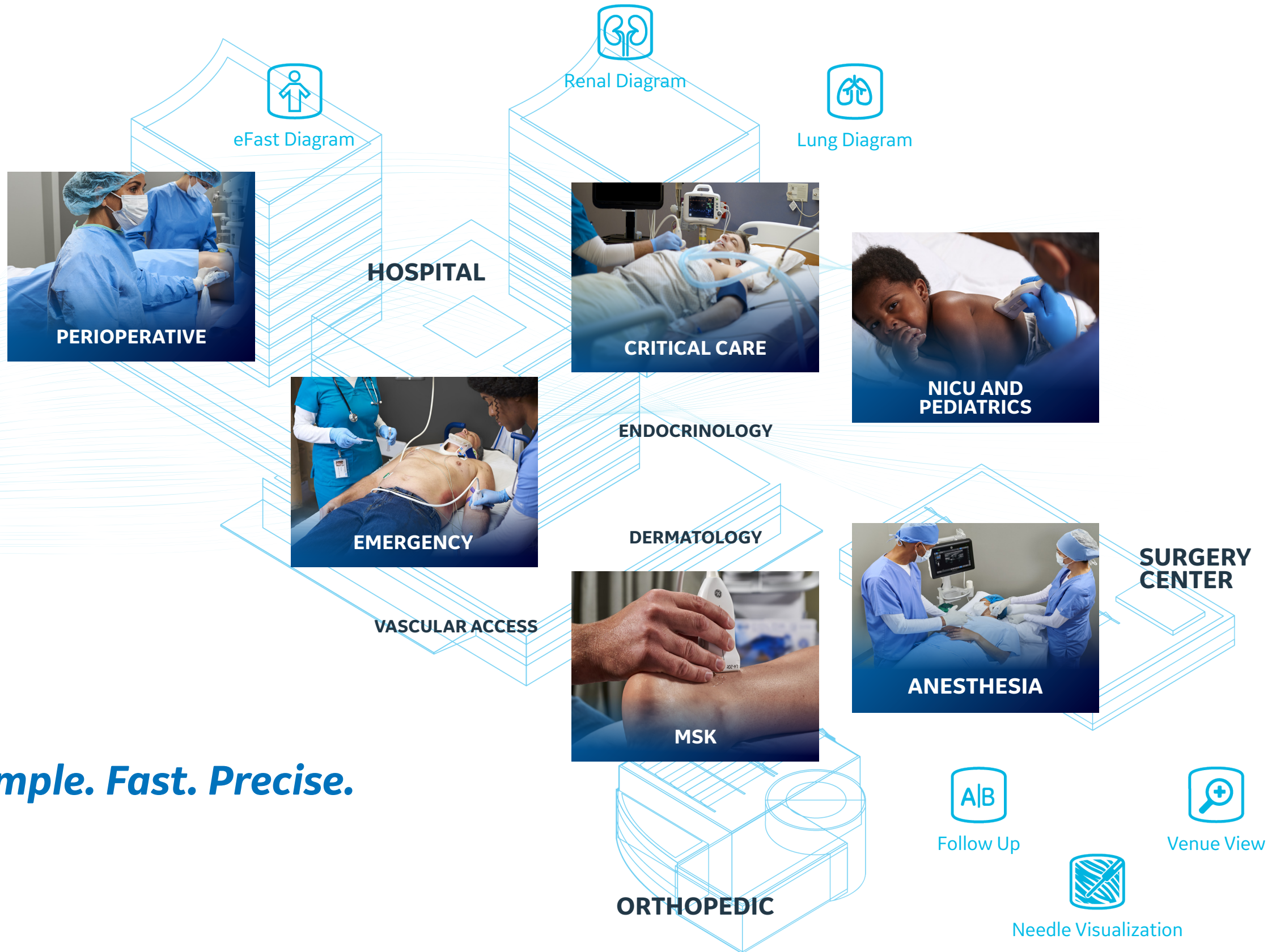
Moves with you

Built with a small footprint with large casters, you can easily maneuver the system to the bedside, navigate between equipment and reach tight spaces common in a point-of-care environment.



Made for your point-of-care.

Inspired by input from hundreds of physicians, this multi-purpose ultrasound system offers a simple, fast and precise way to assess your patient's medical status. The Venue point-of-care ultrasound enables you to acquire data easily, work fast, reduce variability and improve accuracy with its AI-enabled tools. Built for a wide range of environments, Venue is a flexible and reliable solution for your point-of-care.



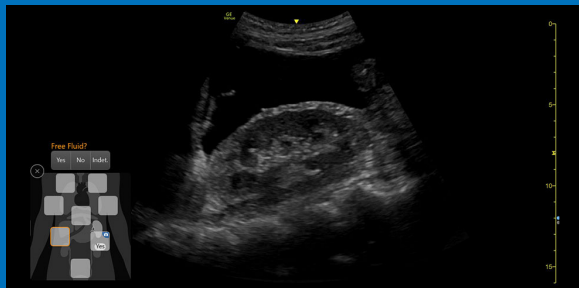
Simple. Fast. Precise.

*All Venue probes have cords that connect directly to the system.

Work smarter, not harder.

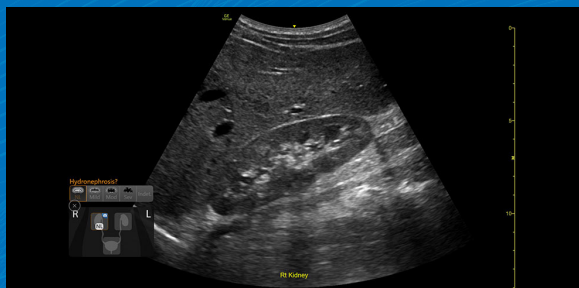
Workflow Features

Our protocol management and easy documentation features provide a visual overview of the entire exam while reducing the need to manually type findings.



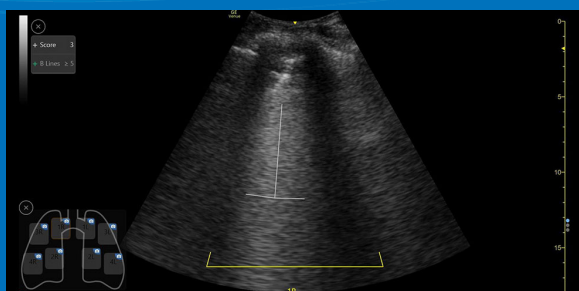
eFAST Diagram

Reduce keystrokes by up to 80%¹ while you assess and document patient status aligned to the eFAST protocol.



Renal Diagram

No need to manually type findings. Just tap and select findings to assess the grade of hydronephrosis.

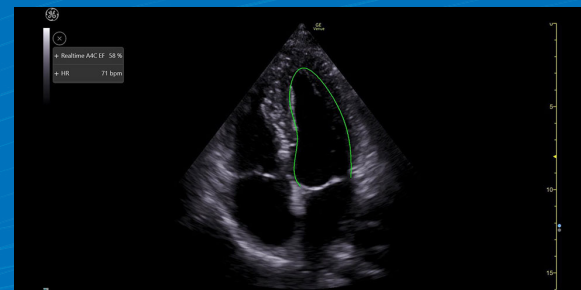


Lung Diagram

Get a single view diagram of anatomical lung segments and the LUSS (lung ultrasound score) in one view with one-click image storing.

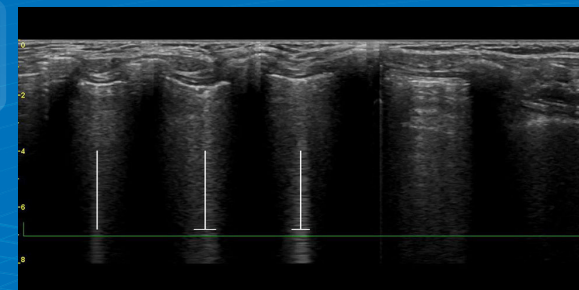
Auto Tools

AI-enabled auto tools enable you to quickly and confidently diagnose your patient and determine a care pathway.



Real-Time EF

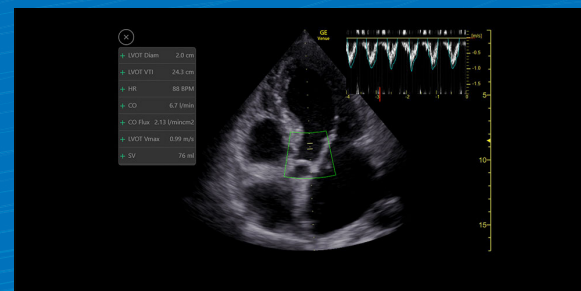
Continuously calculate the real-time ejection fraction during live scanning with results within +/-10 points of experts in 86% of cases.¹



Lung Sweep

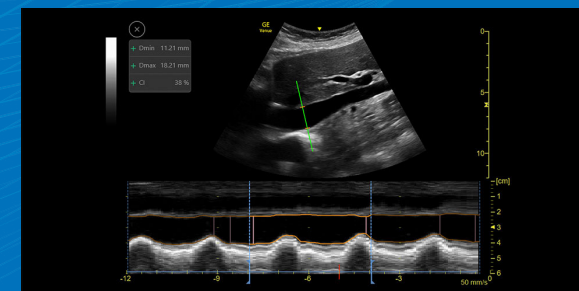
Rapidly visualizes and provides a dynamic, panoramic view of the entire lung to make your diagnosis.

Shock Toolkit: Evaluate shock with auto-features that focus on the condition of the heart, lungs and inferior vena cava.



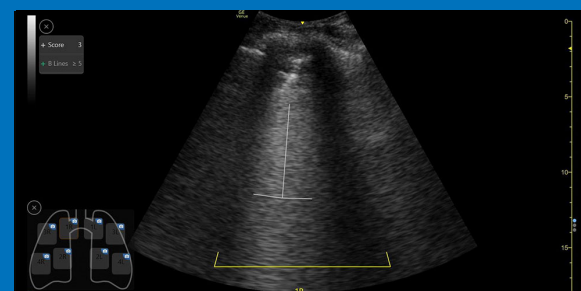
Auto VTI

Experience up to 82% time savings¹ by quickly trending VTI over time and assessing the heart in a single step.



Auto IVC

Equivalent to an expert user's ability 87% of the time,¹ measure IVC distensibility or collapsibility automatically and accurately.



Auto B-Lines

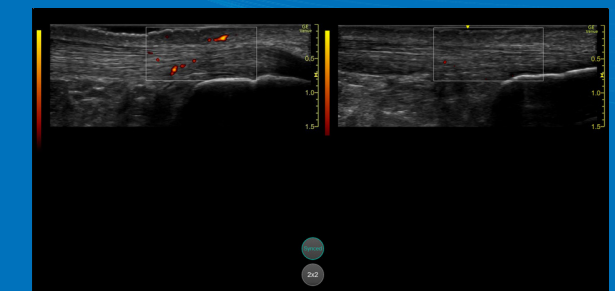
Highlight and count B-lines in real-time. With counts as reliable as visual counting,¹ just press "freeze" to display the frame with the highest b-line count.

Other Screens



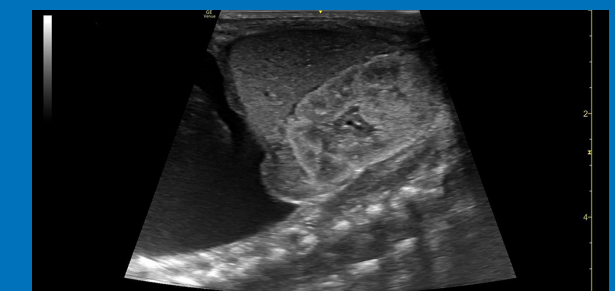
Simple Screen

Remove the clutter and see an 18% larger ultrasound image.² View only the icons you want by activating Simple Screen mode.



Follow Up

Automatically recall parameter settings from a previous exam including comments and body patterns to quickly and accurately assess patient progress.



Venue View

View up to 60cm of anatomy being scanned with anatomical relationships in one, panoramic image.



 www.pocushub.net

*** Products mentioned in the material may be subject to government regulation and may not be available in all countries. Shipment and the effective sale can only occur after approval from the regulator. Some applications or probes may not be available on all product versions.**

- 1 Supporting evidence for Venue and Venue Go is documented in DOC2391130. Supporting evidence for Venue Fit is documented in DOC2454794.
- 2 Supporting evidence for Venue Fit is documented in DOC2454794

©2021 GE All rights reserved.

GE, GE, the GE monogram, Venue, Venue Go, Venue Fit, cSound and XDclear are trademarks of GE. VESA is a registered trademark of the Video Electronics Standards Association. Windows is a registered trademark of Microsoft Corporation.

Product may not be available in all countries and regions. Full product technical specification is available upon request. Contact a GE Healthcare Representative for more information. Please visit www.gehealthcare.com/promotional-locations. Data subject to change.

